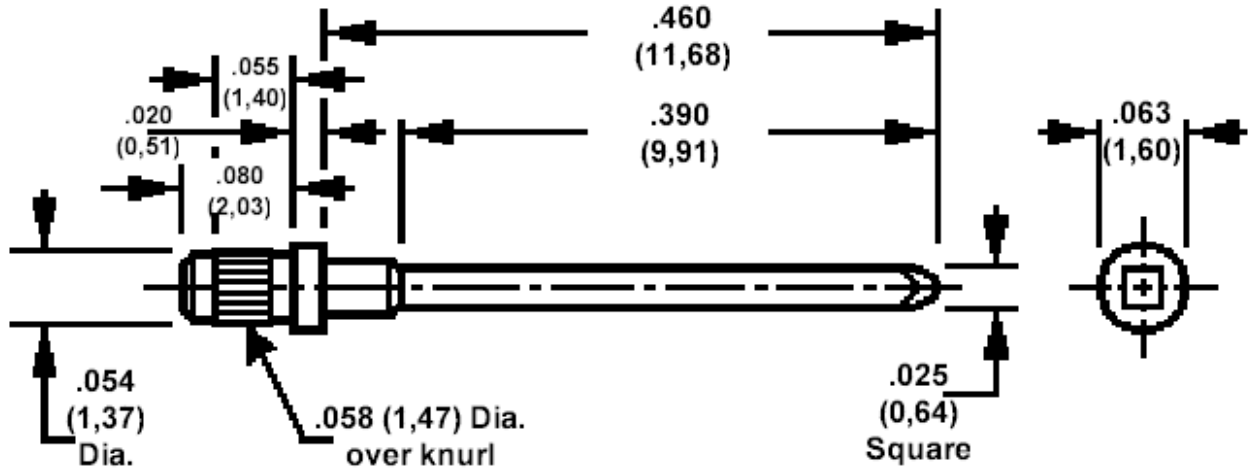


Technical Data Sheet

155-1077, Wire Wrap Pin - 2 Wrap, Turned, .055 (1,40) Mounting Hole (#54 Drill)



For Board thickness .062 (1,57) or greater

How to order code
155-1077-01-XX-00
 Basic Part No (XX = Finish)

Component	Material	Finish (XX)	
		-03	-04
Wire Wrap Pin	Brass	Gold	Electro Tin

Mechanical tolerance unless otherwise stated $\pm .005(0,13)$